



**SANDALWOOD.**  
IMPROVE YOUR PROCESS™

**EPF**  
ERGONOMIC PATH FINDER SOFTWARE  
For Ford Suppliers

## Ergonomic Path Finder for Ford Suppliers (EPF-FS)

## Software Training Classes for Ford Suppliers

**SANDALWOOD.**  
IMPROVE YOUR PROCESS™

37450 Enterprise Court  
Farmington Hills, MI 48331  
Phone: 1-248-848-9500  
Fax: 1-248-893-0266

[www.sandalwood.com](http://www.sandalwood.com)

## Ergonomic Path Finder Software

*Ergonomic Path Finder for Ford Suppliers (EPF-FS)* is a software that guides the user towards the right ergonomic tool for the task.

EPF-FS was designed for **quick and easy use** by both novices and experts in ergonomics and related fields.

The software uses **realistic illustrations** and **clear descriptions** guide the user along the correct path for the task analysis.

You can conduct **task analysis** for jobs that involve:

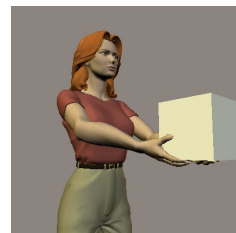
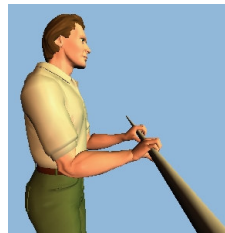
- Pushing and Pulling
- Lifting and Lowering
- Carrying
- Hand Intensive Work
- Repetitive and Forceful Exertions
- Metabolic Analysis

EPF-FS contains **published tools and references**, including:

- Liberty Mutual Tables
- NIOSH Lift Equation
- RULA
- Strain Index

The software program helps to **remove subjectivity** in analysis and guide all users to the same tool given the task parameters.

Your result will be a **professional summary** of the analysis results.



**SANDALWOOD.**  
IMPROVE YOUR PROCESS™

**EPF**  
ERGONOMIC PATH FINDER SOFTWARE  
For Ford Suppliers

## Why take this course?

- The Ergonomic Path Finder for Ford Suppliers (EPF-FS) has been designed by the Ergonomics Group at Ford's Vehicle Operations. This software parallels that used by their team during the design process.
- Using EPF-FS will enable Suppliers to comply with *Ford Vehicle Operations Tool Line-Up Operating Procedure for Vendors*.

## What you will learn: Full Day Training

- Ergonomic Principles: How to identify Risk Factors and eliminate them in design.
- Analysis Tools: Introduction the ergonomic analysis tools used in EPF-FS.
- How to use the EPF-FS software to assess workstation/ equipment design.

## What you will learn: Half Day Training

- How to use the EPF-FS software to assess workstation/ equipment design. This course assumes a basic understanding of ergonomics and commonly used analysis tools.