

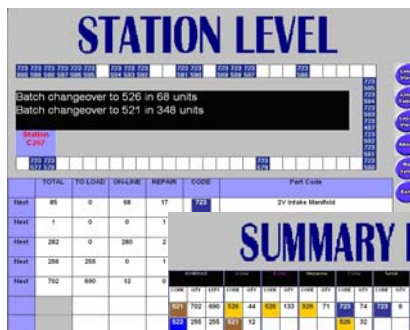
## See your Product Flow from anywhere in Real-Time 24/7

### ISEE WILL EMPOWER

- P**roduction Personnel
- E**ngineering
- O**perations
- P**roduction Control and Logistics
- L**eadership
- E**xternal Suppliers

### ISEE's PROVEN RESULTS

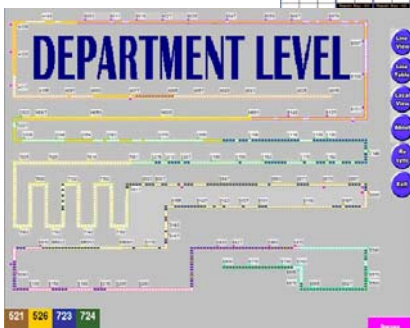
- ⇒ Increases efficiency in productivity, quality, and inventory management
- ⇒ ROI measured in months, not years
- ⇒ Early warning indicators enable proactive responses
- ⇒ Configurable to your process
- ⇒ Capitalizes on your Activplant investment



Designed to support production floor in-station processing by managing build complexity and resource utilization



Designed to support production planning and materials management by providing scheduled build, repair unit, and in process inventory information



Designed to illustrate plant wide process flow by product type. View in real time to identify productivity concerns, or review historically for bottleneck analysis

Activplant Channel Partner



**To view a DEMO, see real life RESULTS, build your BUSINESS CASE, or ORDER: visit [www.sandalwood.com](http://www.sandalwood.com)**